



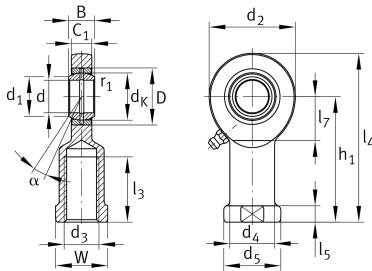
## GIR12-DO

### Rod end

Schaeffler ID:  
0066353930000

Rod end with internal thread, right hand thread, requiring maintenance, sliding contact surface: steel/steel, DIN ISO 12240-4, dimension series E, type F, open design

### Technical information



### Main Dimensions & Performance Data

d	12 mm	Bore diameter bearing
D	22 mm	Outside diameter bearing
B	10 mm	Width inner ring
$C_r$	10,800 N	Basic dynamic load rating, radial
$C_{0r}$	30,400 N	Basic static load rating, radial
$G_r$	0,023 - 0,068 mm	Radial Clearance
	0.099 kg	Weight

### Dimensions

$d_K$	18 mm	Ball diameter
$d_1$	14.9 mm	Outer flange diameter inner ring
$d_2$	34 mm	Outer eye diameter
$d_3$	M12	Thread size
$d_4$	17.5 mm	Shank diameter
$h_1$	50 mm	Shank Length Internal thread head
$\alpha$	11 °	Tilt angle
$l_3$	23 mm	Thread length Internal thread
$l_4$	67 mm	Total length internal thread head
$l_5$	6.5 mm	length rod end shank
$l_7$	18 mm	Distance drilling with/shaft start
$d_5$	22 mm	Shank diameter, large
$C_1$	8 mm	Width of the rod end
$r_{1smin}$	0.3 mm	Edge Spacing
W	19 mm	Width Across Flat
$d_{OT}$	0 mm	Bore diameter bearing, upper tolerance
$d_{UT}$	-0.008 mm	Bore diameter bearing, lower tolerance
$B_{OT}$	0 mm	Width inner ring, upper tolerance
$B_{UT}$	-0.12 mm	Width inner ring, lower tolerance

**Temperature range**

T <sub>min</sub>	-60 °C	Operating temperature min.
T <sub>max</sub>	200 °C	Operating temperature max.